

Community
Living
Toronto



Sector Stats Comparison 2015-16 Q4 and FY 2016-17 Q4

Data Collection Fiscal Year 2016 - 2017

Thanks to everyone for submitting their Q4 data.

We were really delayed with updating the exporter as the budget layout Changed. If you didn't submit a quarter package then we will begin accepting Submissions again.

Leyla has joined our internal team and will be helping us with the revamping of the reports and data. She has been with the Association for a number of years on our infrastructure team and moved over to the Application and Information team during the summer.

Submissions:

FY 2015-16	44
FY 2016-17	28 Submitted
	25 Imported
	1 was unable to get Exporter to work
	1 submitted FY 2015-16
	1 we had issues with Exporter

- Data package was originally developed by the Ministry and our Report was modelled after it.
- The report has changed a little over the last two years however now that we have some base data we would like to dig deeper and provide better information
- Therefore for Fiscal Year 2017-18 we will begin the process to review, revise and extend the data package.

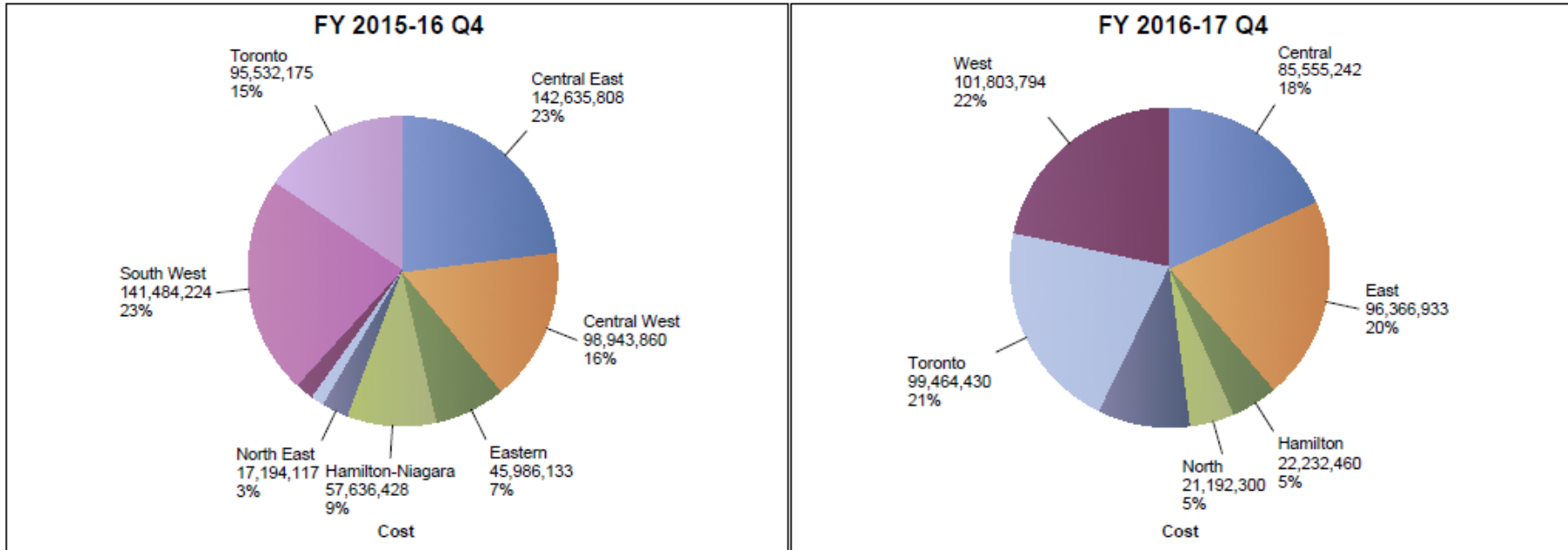
- The suggested plan is as follows:
 1. Starting tonight the data group will meet and start to lay the ground work for what is needed to provide better insight into the collected data
 2. We will then meet again during the fall to continue to expand on the requirements. Outcome will be a framework for what is needed
 3. The CLToronto team will take the details and begin to mock up the new package against current data
 4. In January/February we will review the package and if possible provide an outline during the DSFG meeting
 5. Provide the Finalized template during the June meeting and begin the collection process.

- Again, if you have not submitted your data then you can get the most recent Data Extractor from my Sector Projects Share:

https://1drv.ms/f/s!AgEVsx6iB_4Uwzauz-kcoRAeWoVp

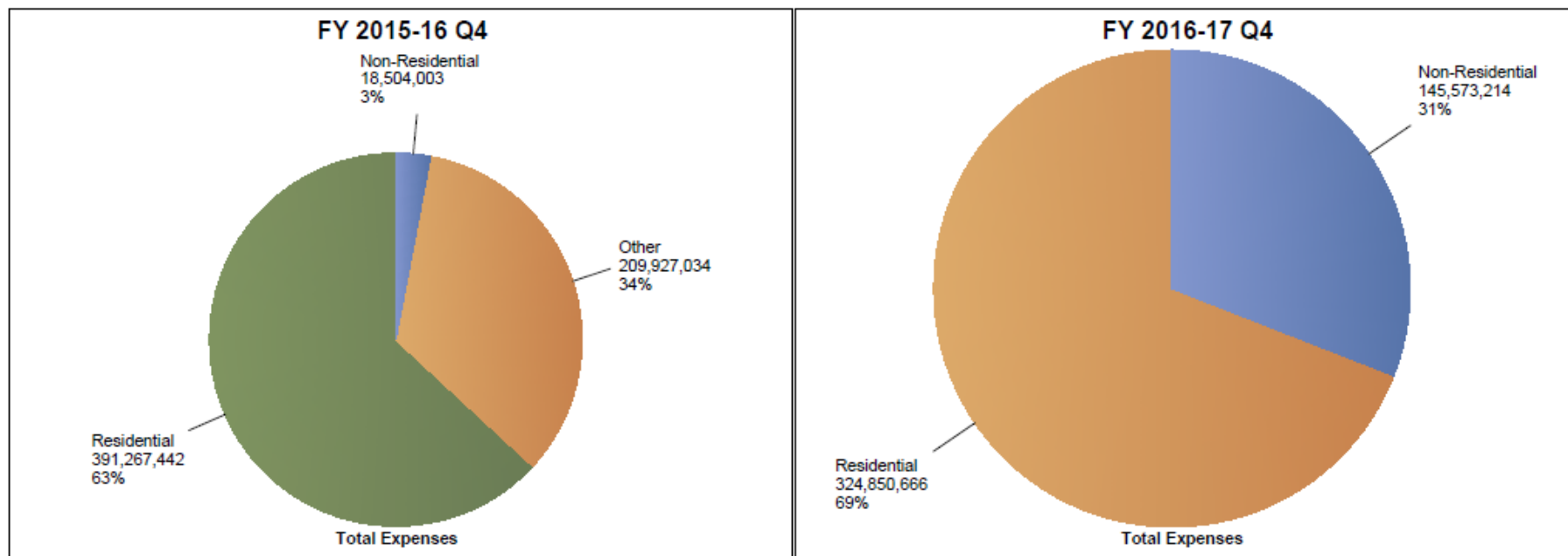
- Don't worry you can email sectorstats@cltoronto.ca and we will send you the link if you need it 😊
- Just select the Sector Data Project folder
- It would be great to have enough base data to allow a year over year for the new Data Collection package

Total Annual Cost (\$) Breakdown by Region

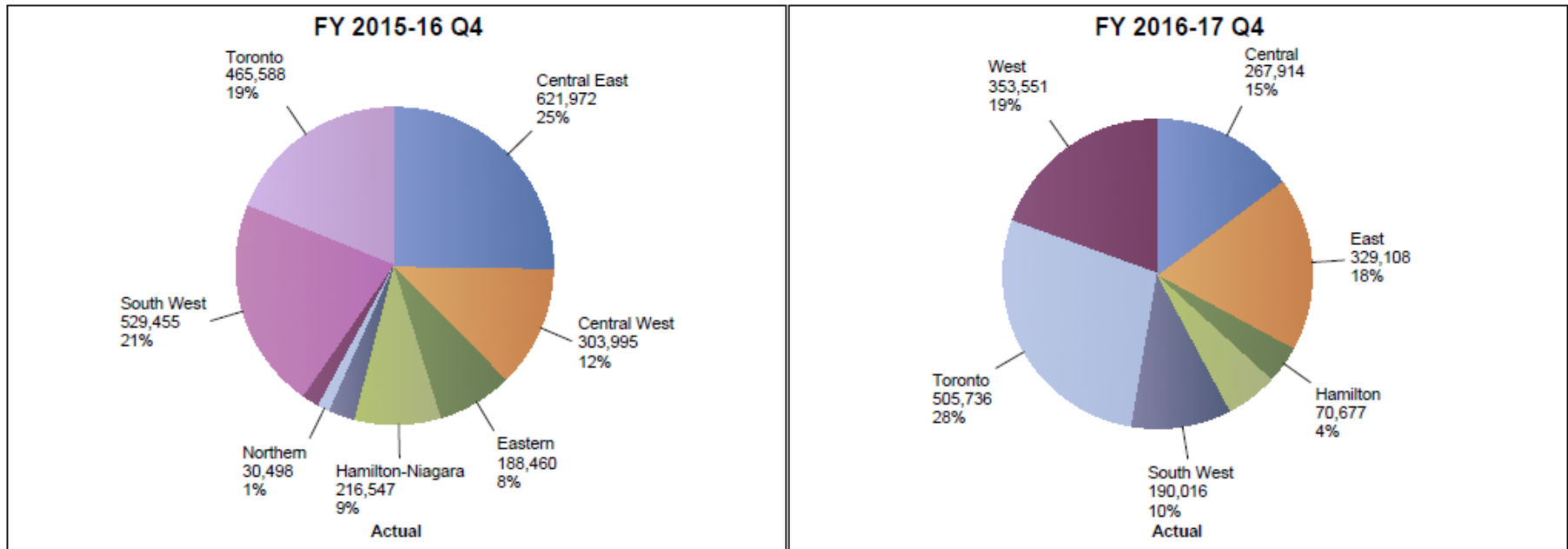


Seeing Similar Distributions

Total Annual Cost (\$) Breakdown by Residential and Non-Residential Detail Codes

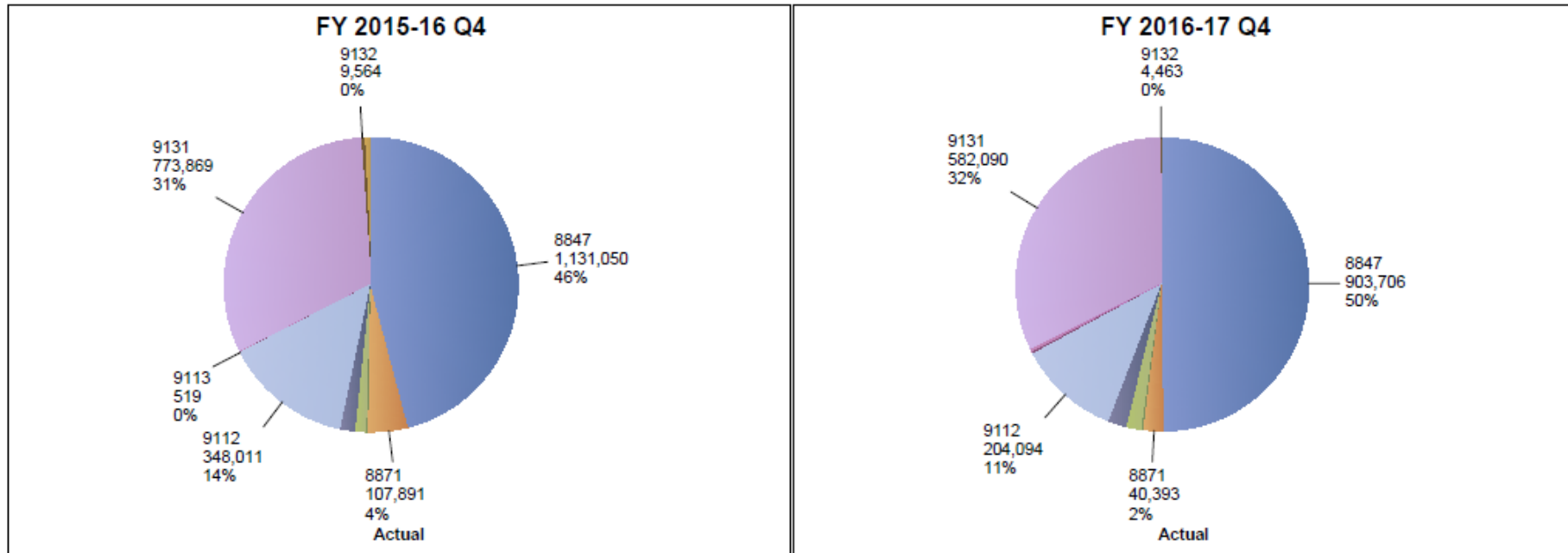


Total # of Days of Care by Region

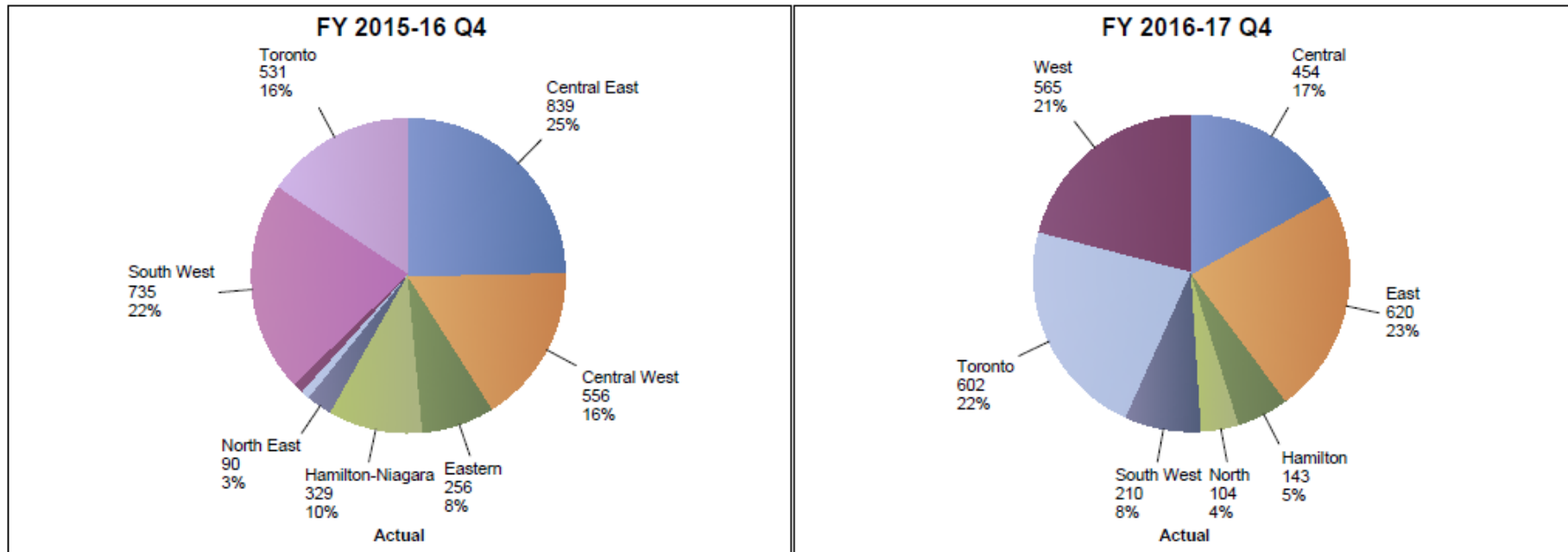


Fewer submissions may have skewed

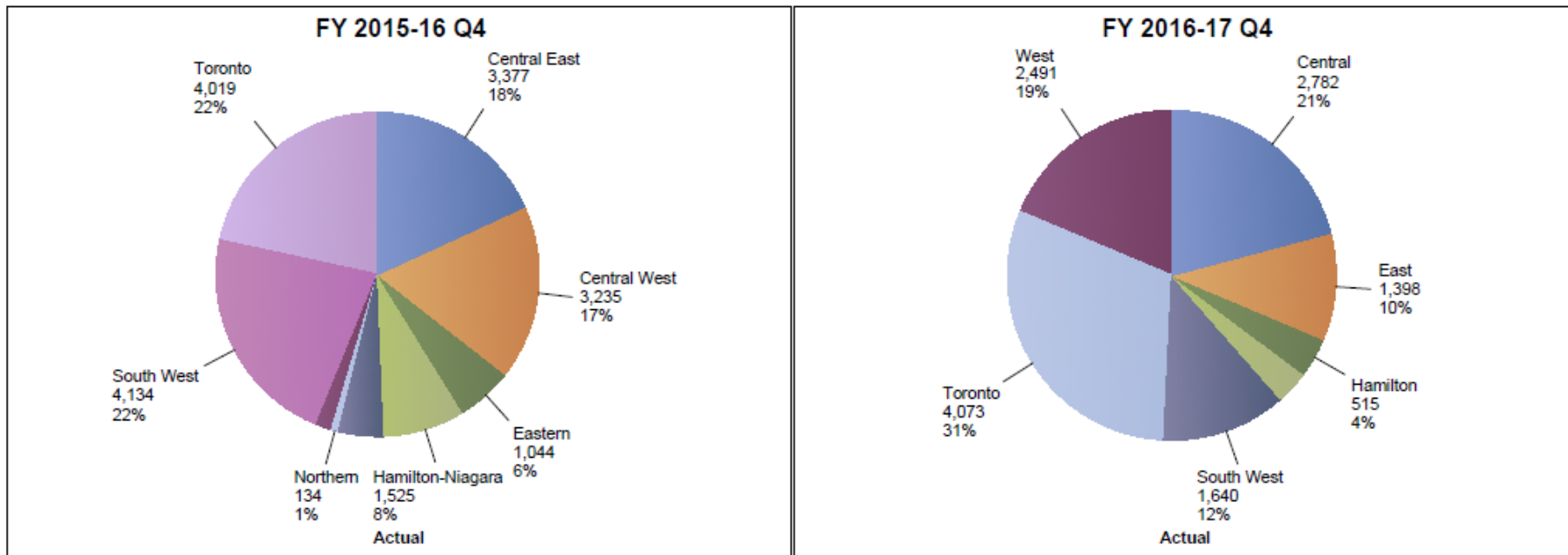
Total # of Days of Care by Detail Code



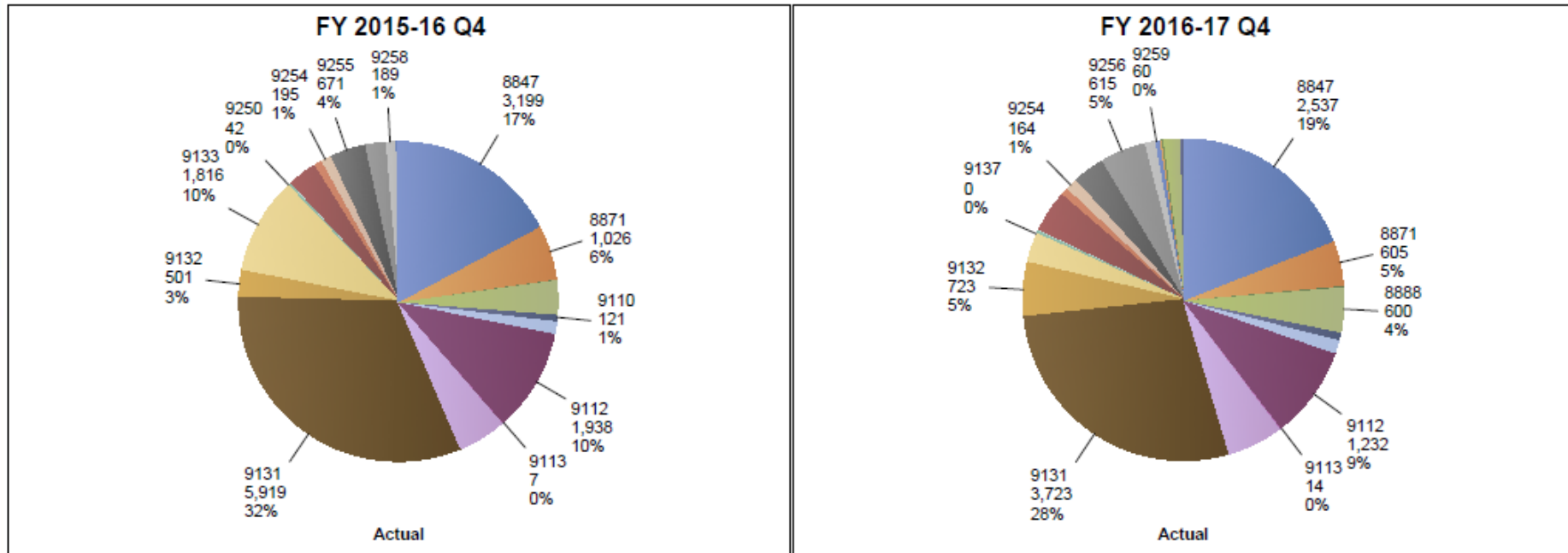
Total # of Beds by Region



Total # of Individuals Served by Region

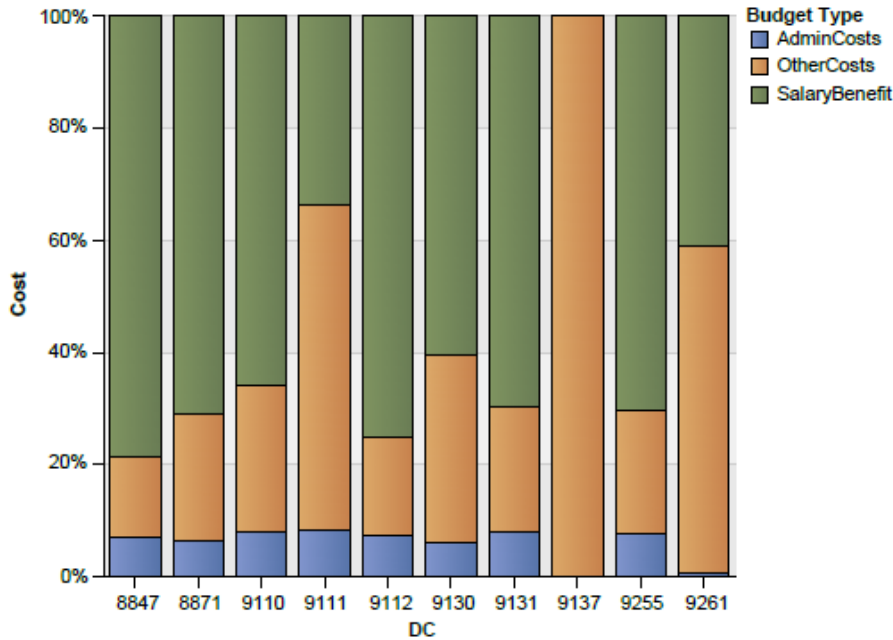


Total # of Individuals Served by Detail Code

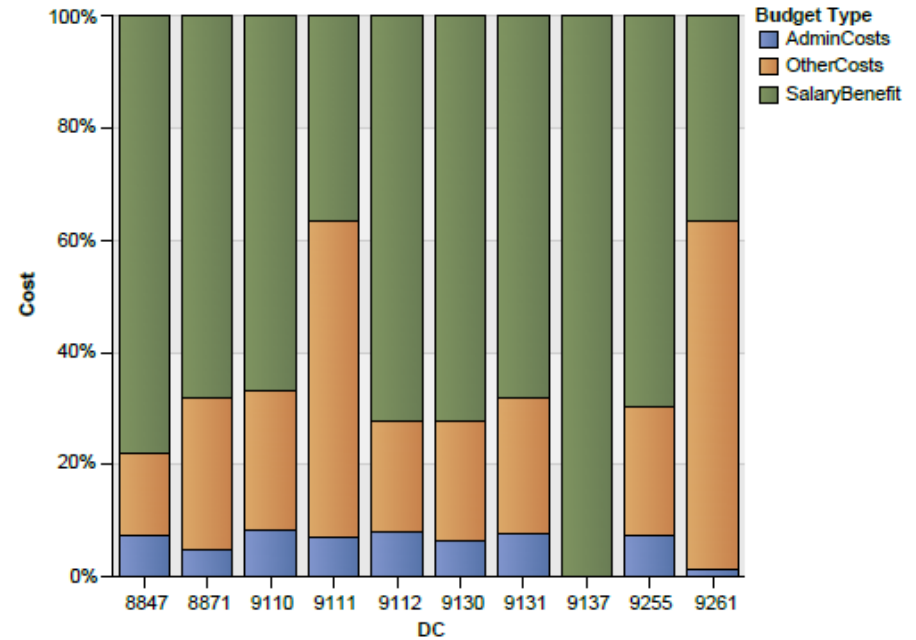


Total Annual Cost Breakdown (%) by Expense Type for 9 Detail Codes

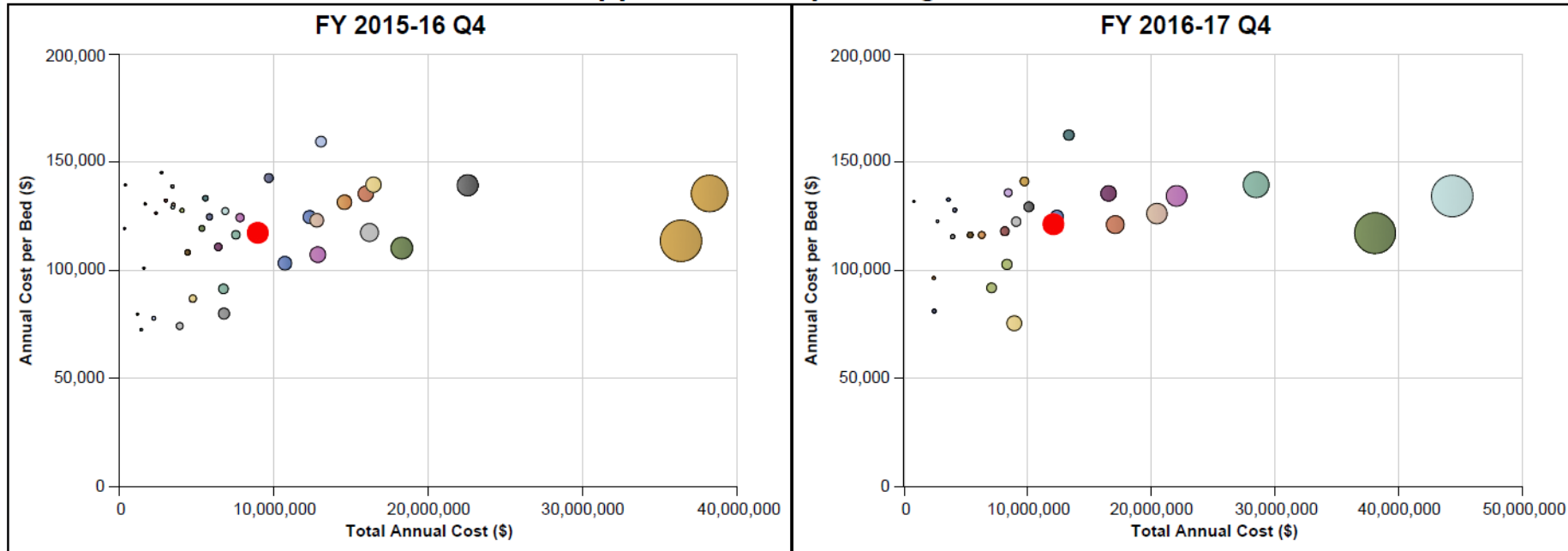
FY 2015-16 Q4



FY 2016-17 Q4

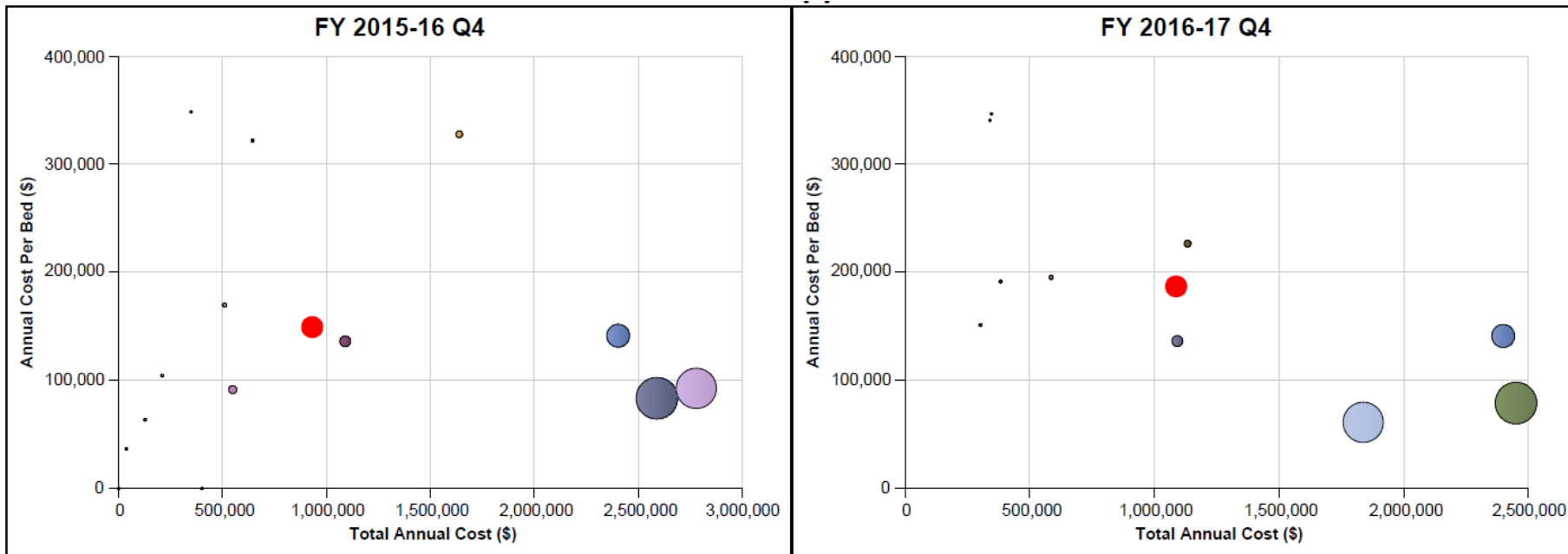


8847 - Supported Group Living Residences

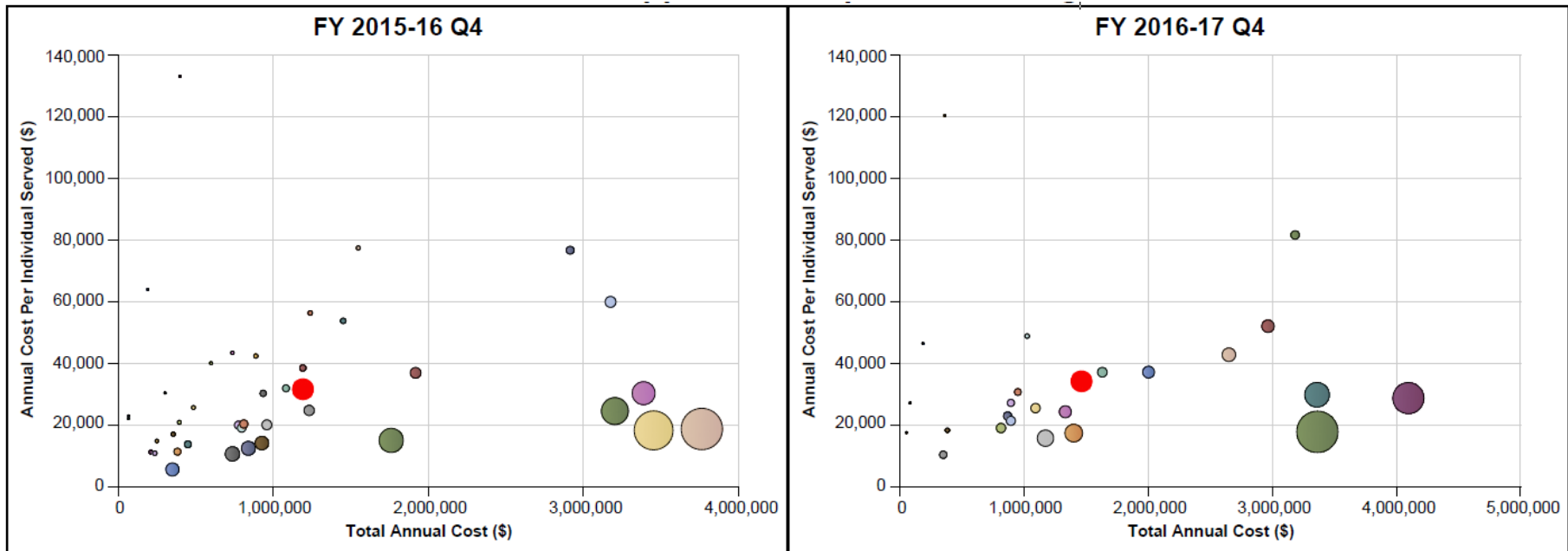


Slight trend upwards in Costs per Item

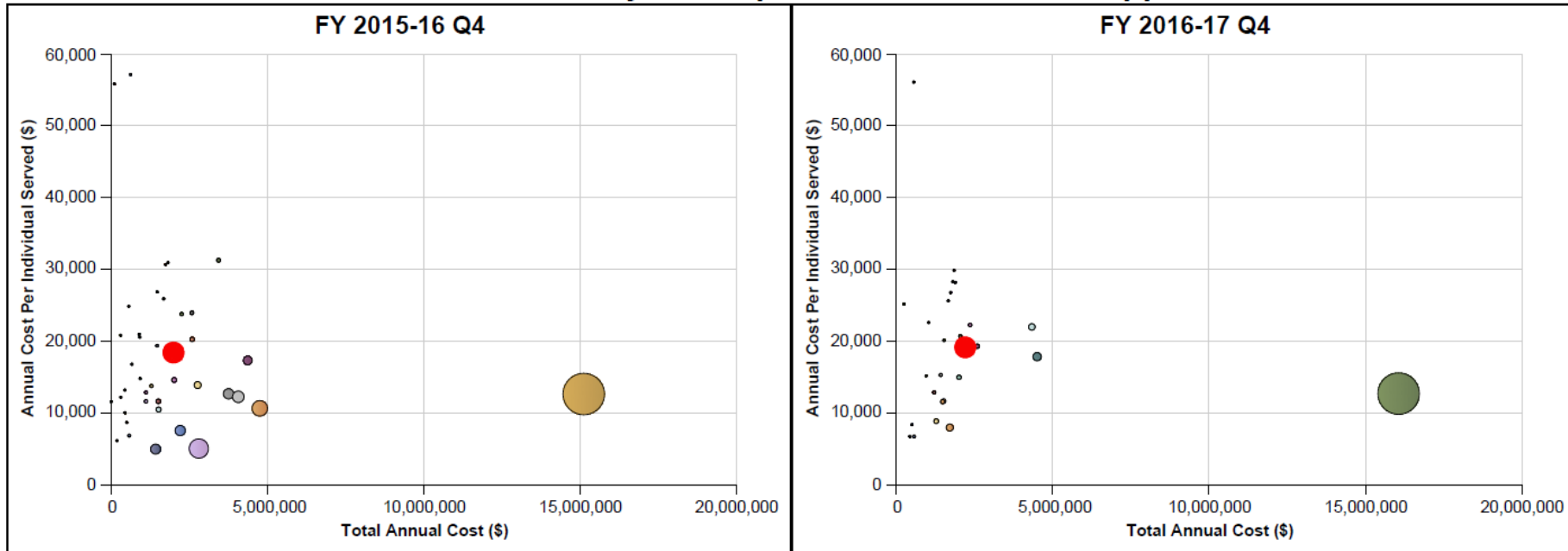
9110 - Intensive Support Residences



9112 - Supported Independent Living



9131 - Community Participation Services and Supports



Very Similar Costs in Year over Year

Thank You

We really appreciate your involvement